

How to read/write your Bosch EDC15 ECU using the MPPS tool

This guide will explain how to setup the MPPS programmer tool. The MPPS programmer can be used to read and write your Peugeot/Citroen EDC15C2 ECU.

Purchasing your MPPS tool

The best place to buy the MPPS tool is from eBay. This typically costs around £25 from a UK seller. It is advisable to use a seller who sells tested tools.

Setup and installation

First , open Mpps Setup v12.0.0.6.exe

(if using an operating system later than windows XP you must right click the icon and then run in XP compatibility mode).

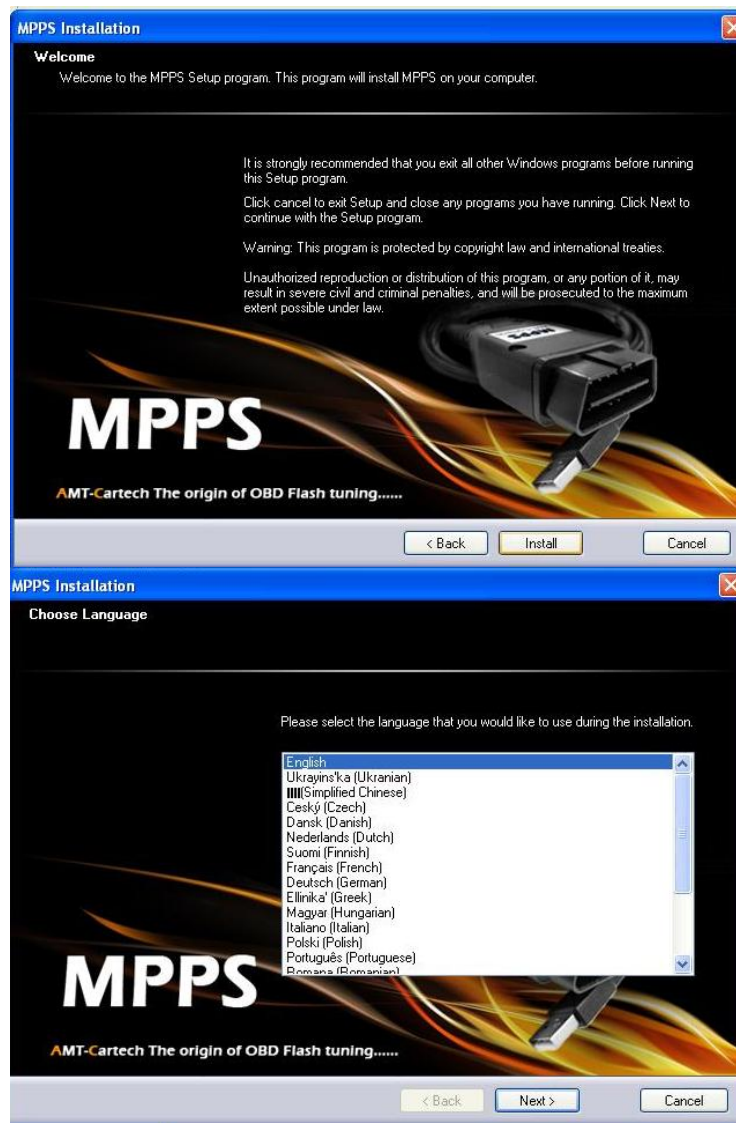
The setup for your tool may differ slightly depending on the software version supplied with your tool.

Select 'Install' to proceed.

Select your language and then 'Next' to proceed.

It is recommended that you restart your computer after the installation is complete.

When finished select 'Finish' to close the software.



Insert the MPPS reader into your computer's USB port. Once you have inserted the MPPS tool you should see 'Found new hardware wizard'.

Select 'No, not this time' from the menu then select 'Next' (now you can locate the driver manually).

From the menu select 'Install from a list or specific location (Advanced)' then select 'Next'

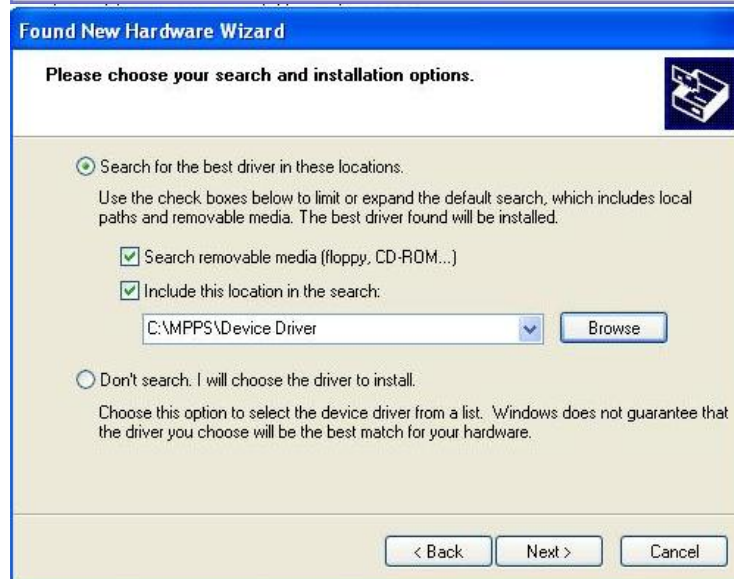
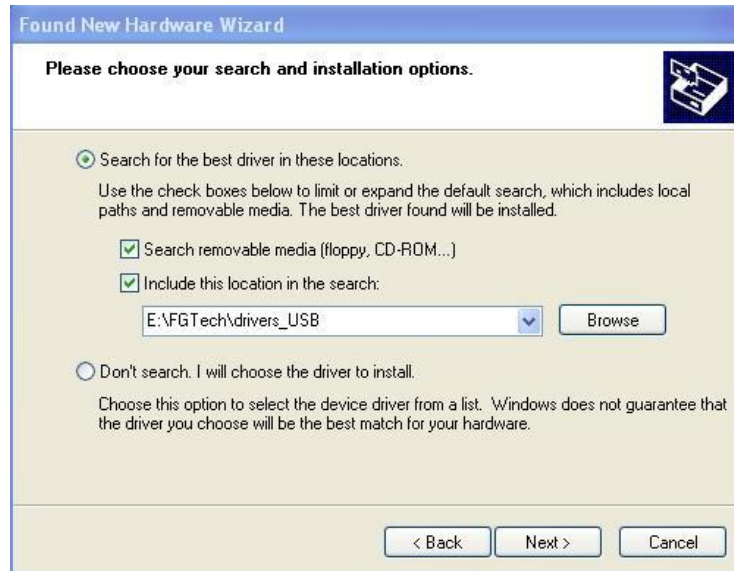


From the menu check 'Search for the best drivers in these locations' then check 'Include this location in the search.'

Select 'Browse' you should now get a small window open to browse for the driver.

The driver location should be located here:
'C:\MPPS\Device Driver'

Once the folder has been selected you can select 'Next' and windows will find the driver in that folder.



Select 'Finish' to complete installation.



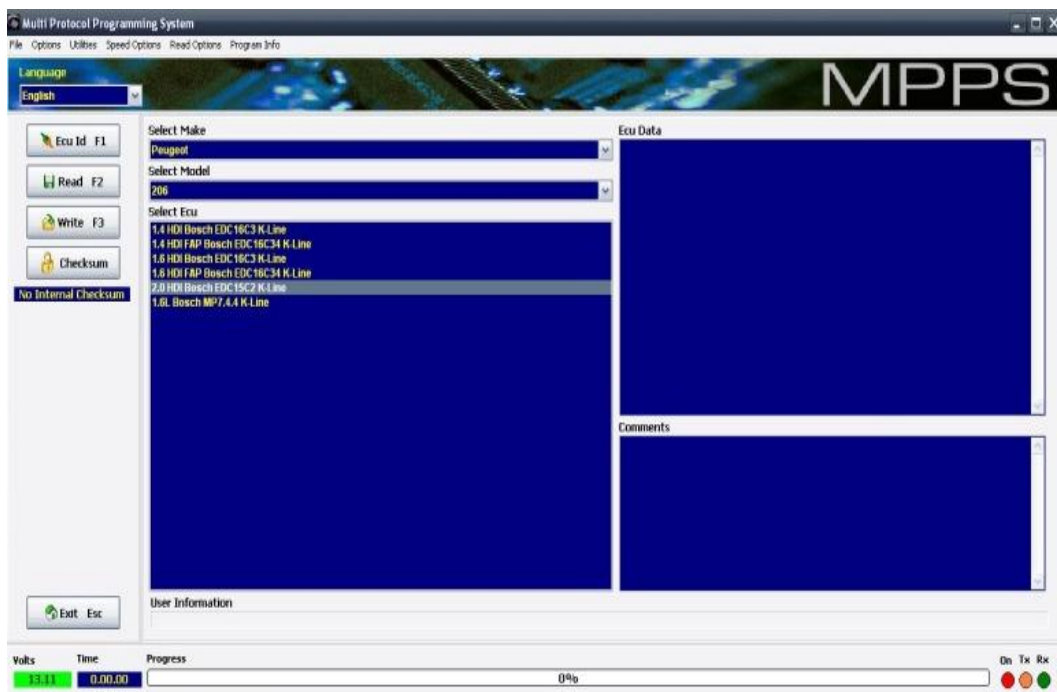
Reading your original ECU data

The MPPS tool requires a stable laptop computer with a good battery. For best results use windows XP and use a laptop with a fully charged battery. Contradictory to what some may say, we recommend you don't attach your laptop's power supply during flashing as this can induce a ground loop which may crash the MPPS software. Instead, be certain you have at least 45 minutes of battery (the read/write process only takes just over a minute, however after finding the OBD port, opening the software etc, you may take longer than anticipated).

It is very important not to disturb your computer while you are reading/writing the ECU.

- **Remain still to avoid moving any wires or connections.**
- **Close all other programs on your computer beforehand.**
- **Turn off fan, heated rear screen, remove fuses from any amplifiers, turn off the head unit or remove the front (before starting this process).**

1. Ensure your car is switched off. Locate the diagnostic port and connect the tool.
2. Connect the USB cable to your laptop.
3. Open the MPPS software through the shortcut on your desktop.
4. Once open, switch on your ignition to 2 clicks (until the engine check light is shown on your dash).
5. Select your car and engine from the menus provided.
6. Select ECU Id on the left.



Disclaimer: This information has been provided by HDI Tuning Ltd to help in programming your Bosch EDC15C2 ECU. By following this guide you agree that all actions are taken at your own risk. We are not responsible for ECU damage caused by incorrect use of the tool described in this document. However, HDI Tuning Ltd are capable of repairing an ECU in the event that programming does not complete successfully.

7. Once the ECU number is displayed, you are ready to read your ECU. Select 'Read'.

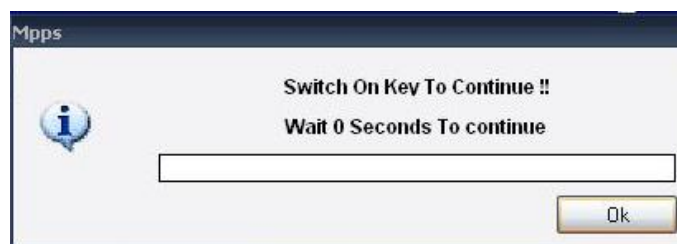


8. The reading process takes just over a minute to complete. Once completed, save the file in an appropriate place with the file name of: YourName.bin

9. Once the read has finished, follow the on screen steps to switch off keys>wait 5 seconds>switch on keys

10. When finished, switch off the ignition and close the program by selecting 'Exit' in the bottom left corner. It is now safe to remove the OBD lead from your car.

11. You can now email your original ECU data to remap@hdi-tuning.co.uk



Writing your ECU

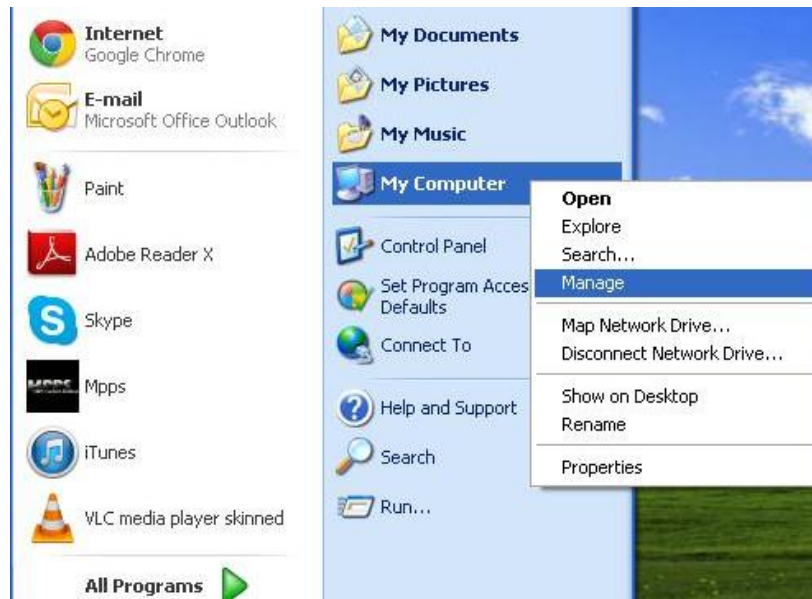
1. Ensure your car is switched off. Locate the diagnostic port and connect the tool.
2. Connect the USB cable to your laptop.
3. Open the MPPS software through the shortcut on your desktop.
4. Once open, switch on your ignition to 2 clicks (until the engine check light is shown on your dash).
5. Select your car and engine from the menus provided.
6. Select ECU Id on the left.
7. Once the ECU number is displayed you can the select 'write'.
8. Locate your remapped file and then select 'ok'.
9. Once the write has finished, follow the on screen steps to switch off keys>wait 5 seconds>switch on keys.
10. Once this is completed, switch off the ignition and close the program by selecting 'Exit' in the bottom left corner. It is now safe to remove the OBD lead from your car.

Your car is now remapped and ready to go, take the car for a test drive and enjoy!
Be sure to leave a review on our [Facebook](https://www.facebook.com/HDITuningLimited) page at www.facebook.com/HDITuningLimited

Trouble shooting during installation

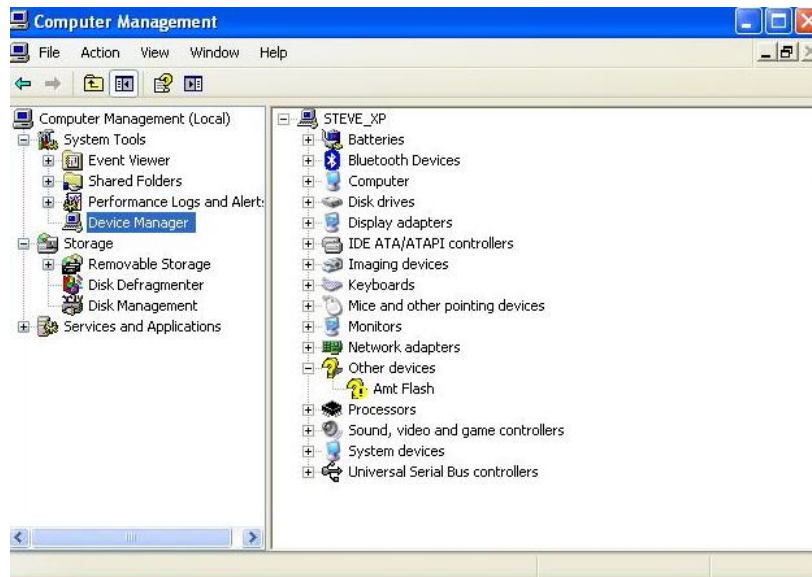
Follow the guide below if windows fails to install the correct driver for your MPPS tool.

If installation was unsuccessful, open the start menu and right click on 'My computer' then select 'Manage' from the drop down menu

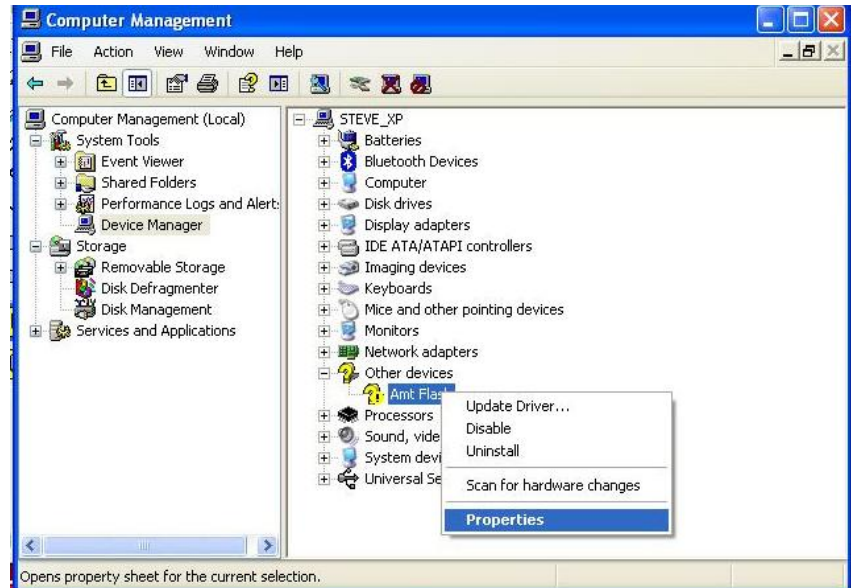


Once open, select 'Device manager' from the menu on the left.

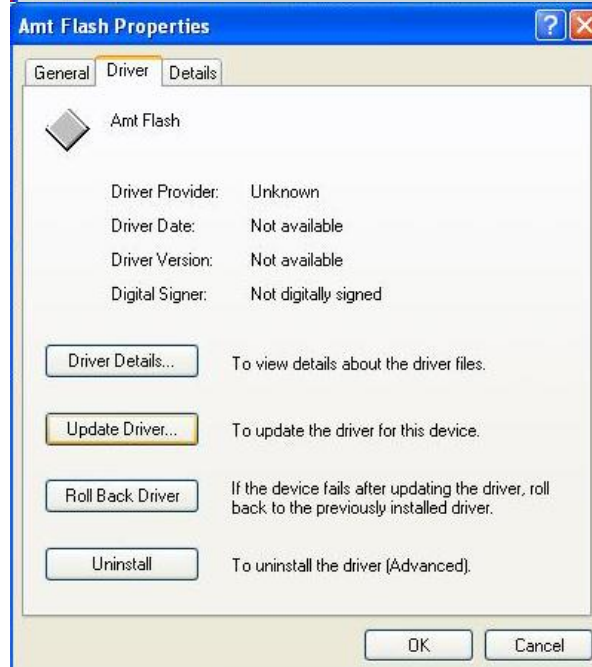
Search through the list to find any items with a yellow question mark displayed to the left.



Once the marked item has been located, right click the item and select 'Properties' from the drop down menu.



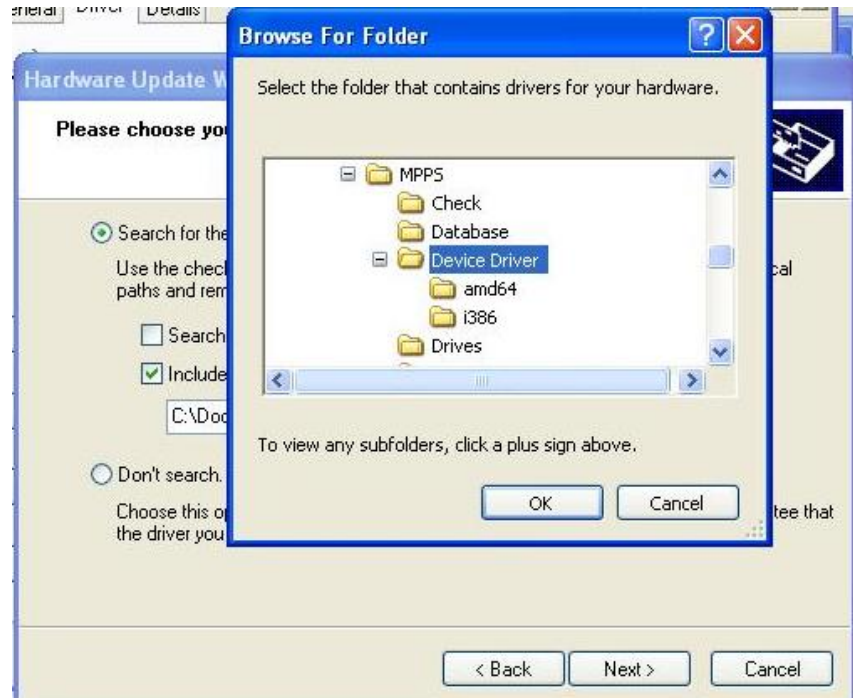
Select the tab named 'Driver' located at the top and then select 'Update Driver...' to proceed.



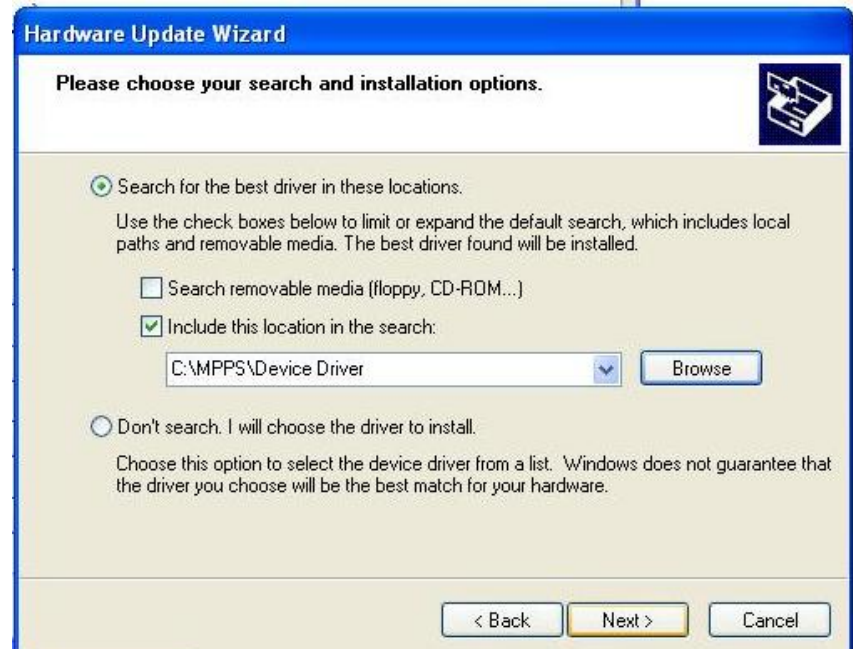
From the menu select 'Search for the best drivers in these locations' then select 'Browse' you should now get a small window open to browse for the driver.

Select the folder:

'C:\MPPS\Device Driver' then select 'OK' to proceed.



Once the driver folder has been located 'Select' next to proceed.



Select 'Continue Anyway' to proceed.

